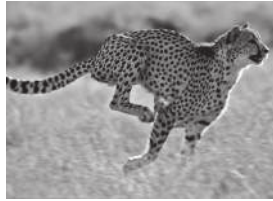


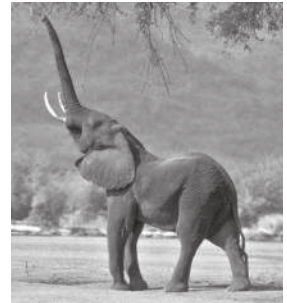
1. Read the article. Choose a title.

- a. Fast and slow b. Animals that live in water c. Amazing animals

Usain Bolt can run 100 meters in 9.58 seconds. But in Africa, there is an animal that can run faster than him: the cheetah. It has long legs and it can run 100 meters in 5.95 seconds. Watch out, Usain!



There are a lot of very strong animals. Elephants can lift about 250 kilograms, for example, with their trunks – that’s about 4.5% of their body weight.



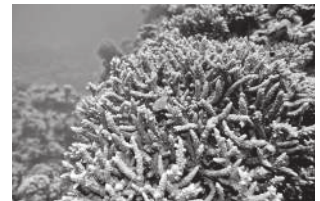
How about smart animals? Dolphins can understand words and sentences, learn simple sign language, and copy people’s actions. Many people think only humans are smarter than dolphins!



But in a way rhinoceros beetles are stronger. Some can lift 850 times their body weight.



A very slow animal lives in the rainforests of Costa Rica: the three-toed sloth. It moves at about 0.24 kilometers per hour. Is there an animal slower than the sloth? Yes, there is: coral! It lives in water and it doesn’t move at all.



2. Match the parts of the statements, according to the article.

- | | |
|--------------------------------------|--------------------------------------|
| 1. A cheetah can run 100 meters | a. learn simple sign language. |
| 2. The three-toed sloth lives | b. than an elephant, in a way. |
| 3. Coral | c. lift over 250 kilograms. |
| 4. Elephants can | d. faster than Usain Bolt. |
| 5. The rhinoceros beetle is stronger | e. doesn't move at all. |
| 6. Dolphins can | f. in the rainforests in Costa Rica. |

3. Answer the questions, according to the information in the article.

- | | |
|---|---|
| 1. How fast can Usain Bolt run 100 meters?
<u>He can run 100 meters in 9.58 seconds.</u> | 4. How much of their body weight can elephants lift with their trunks?
_____ |
| 2. How fast does the three-toed sloth move in one hour?
_____ | 5. How much of their body weight can rhinoceros beetles lift?
_____ |
| 3. Why is coral slower than a sloth?
_____ | 6. What can dolphins do?
_____ |